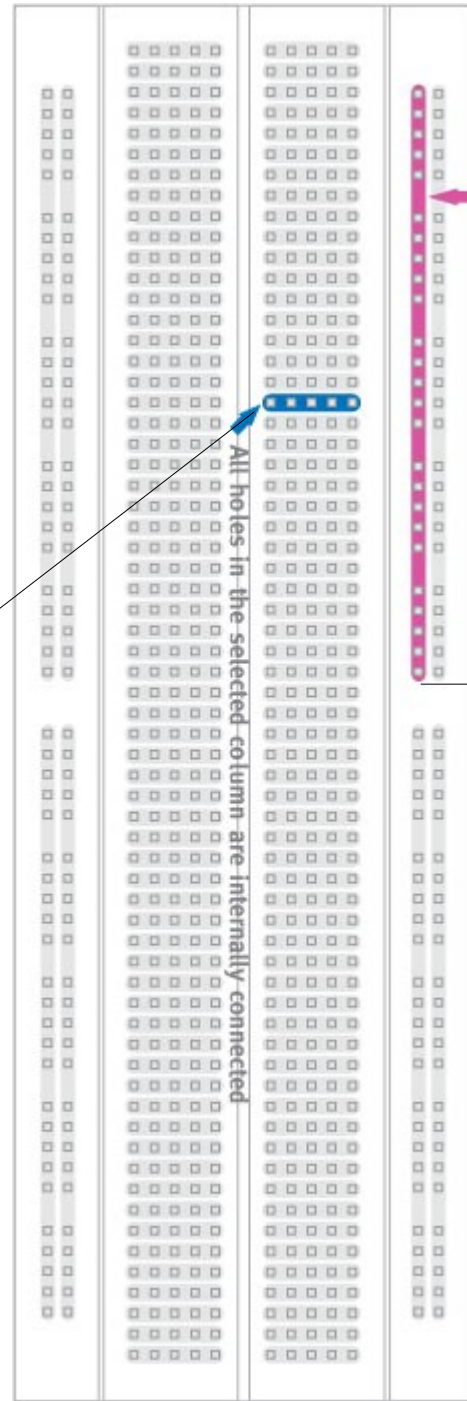


Los agujeros (5) están conectados entre si en una línea horizontal

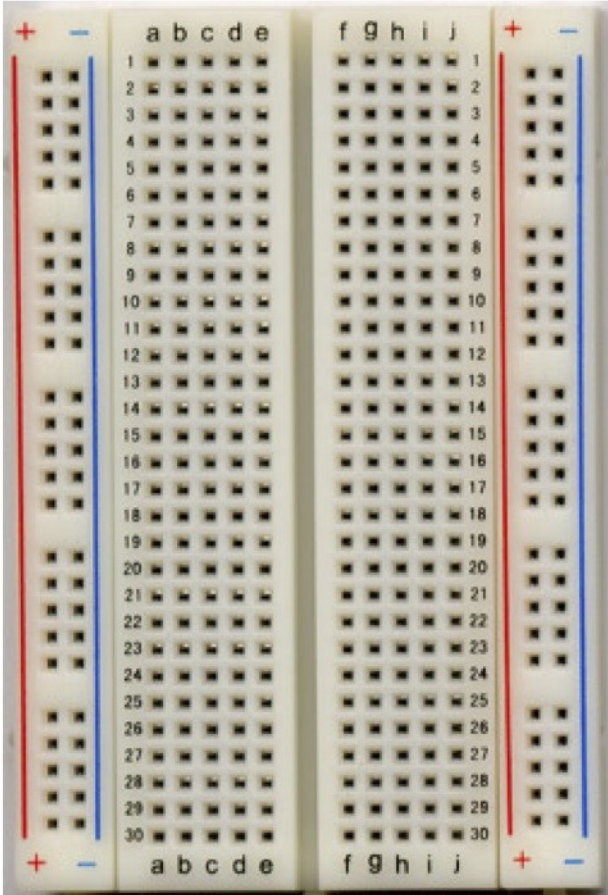


All holes in the selected column are internally connected

All holes in the selected row are internally connected

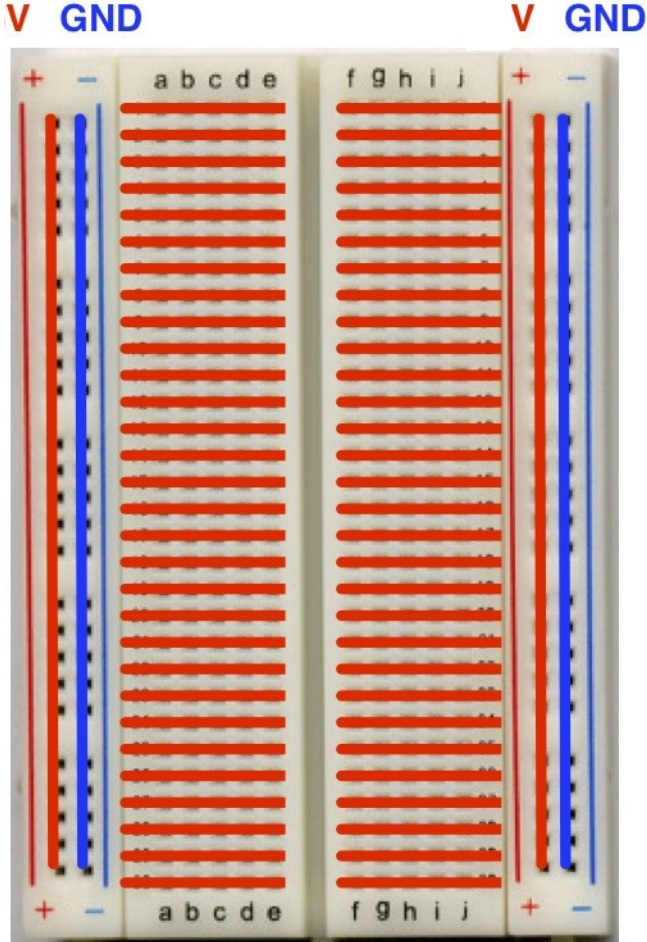
Cada una de las dos columnas laterales, están conectadas verticalmente.

Breadboard (photo)

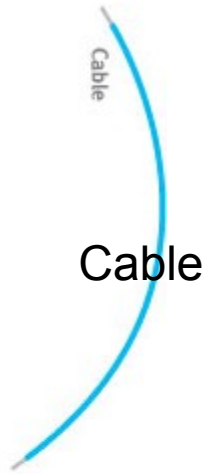
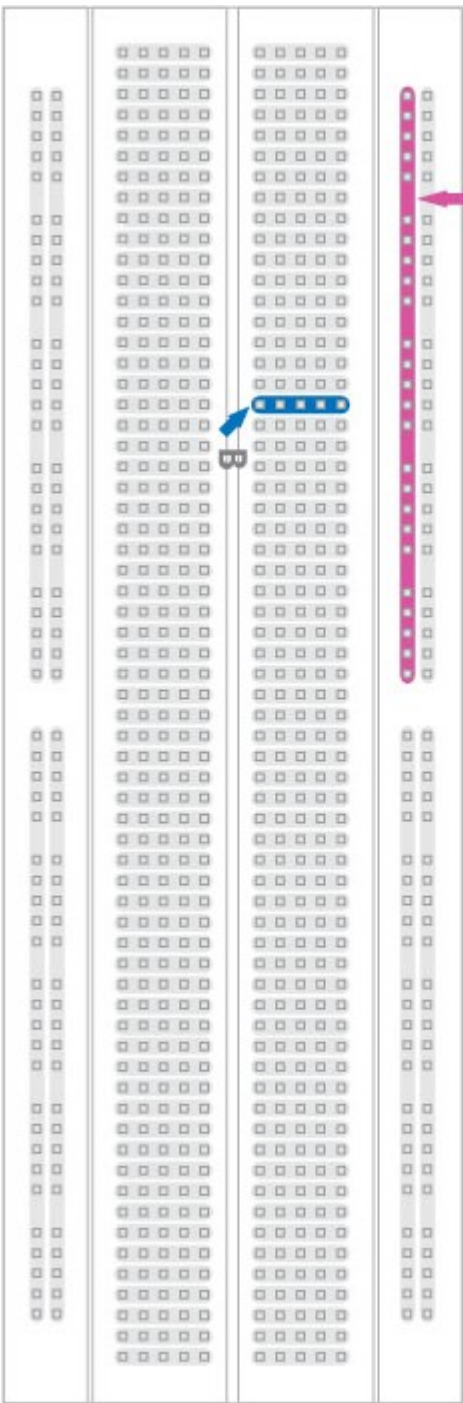


Video and Website © 2004 ClarkZapper.net

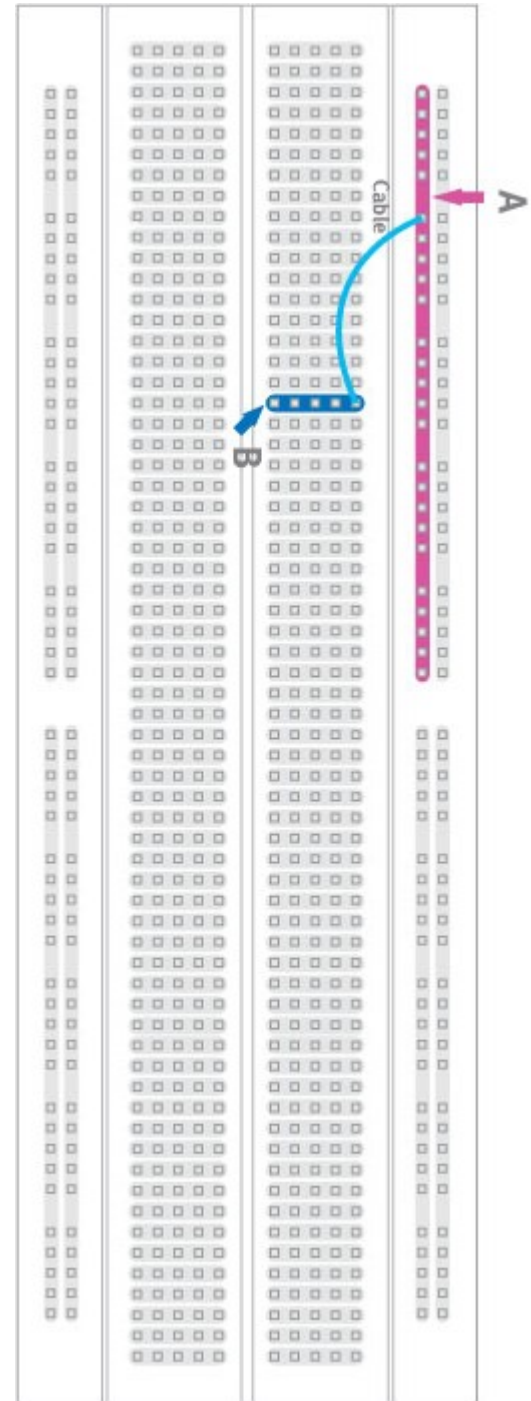
Breadboard (schematic)

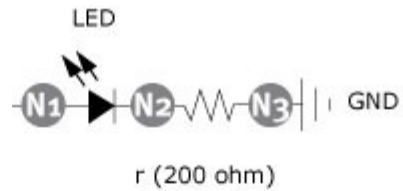


Video and Website © 2004 ClarkZapper.net



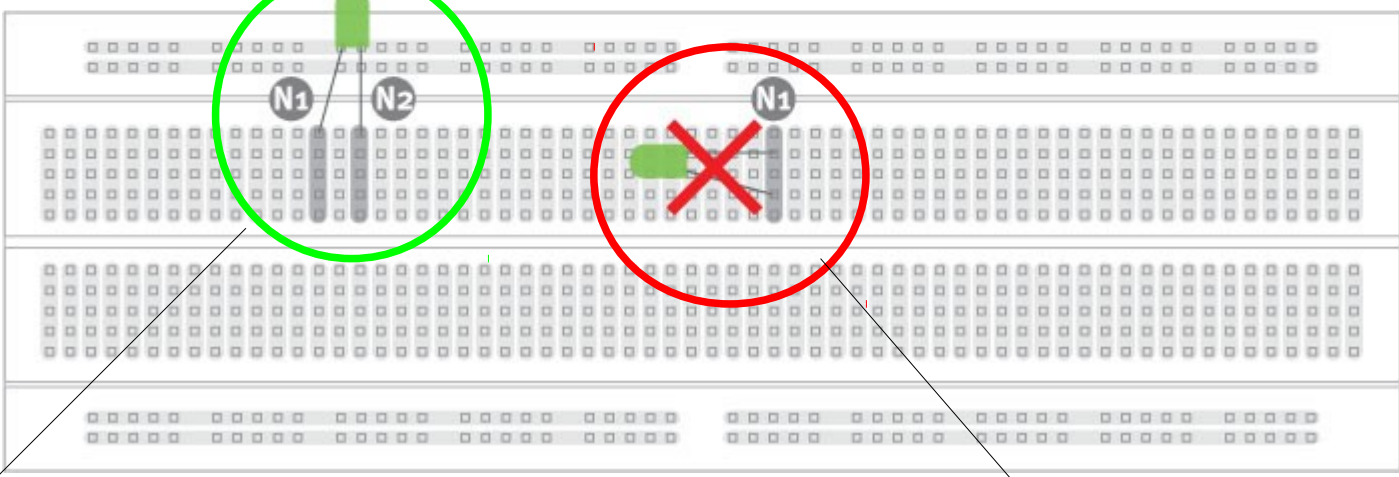
Si quiero conectar A con B,
puedo hacerlo con un cable





CORRECT: locate the component on the breadboard so the legs (terminals) are located in different nodes (columns)

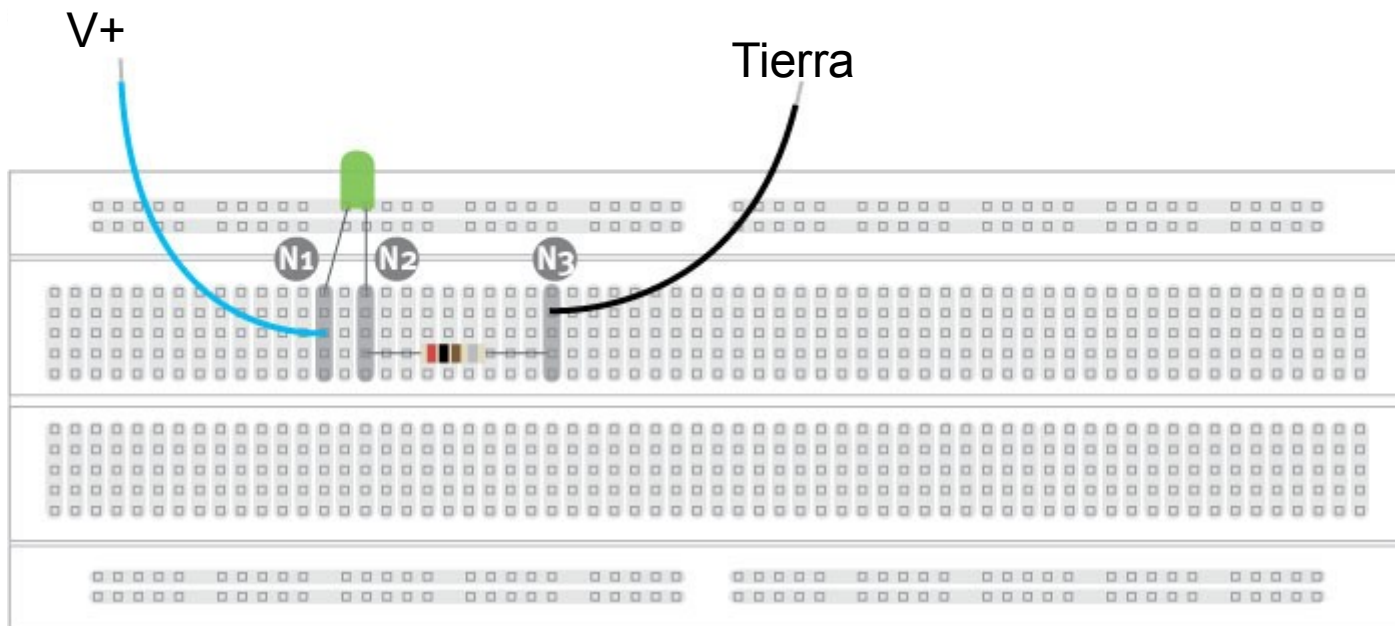
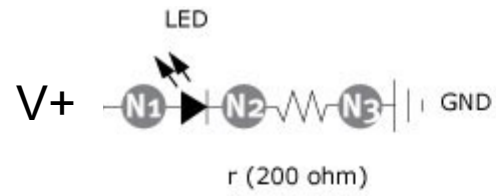
INCORRECT: the component's legs (terminals) are located in the same node (column)



Acá tengo en N1 y en N2 conexiones posibles para los extremos del LED

Este caso es incorrecto porque conecto entre si los extremos

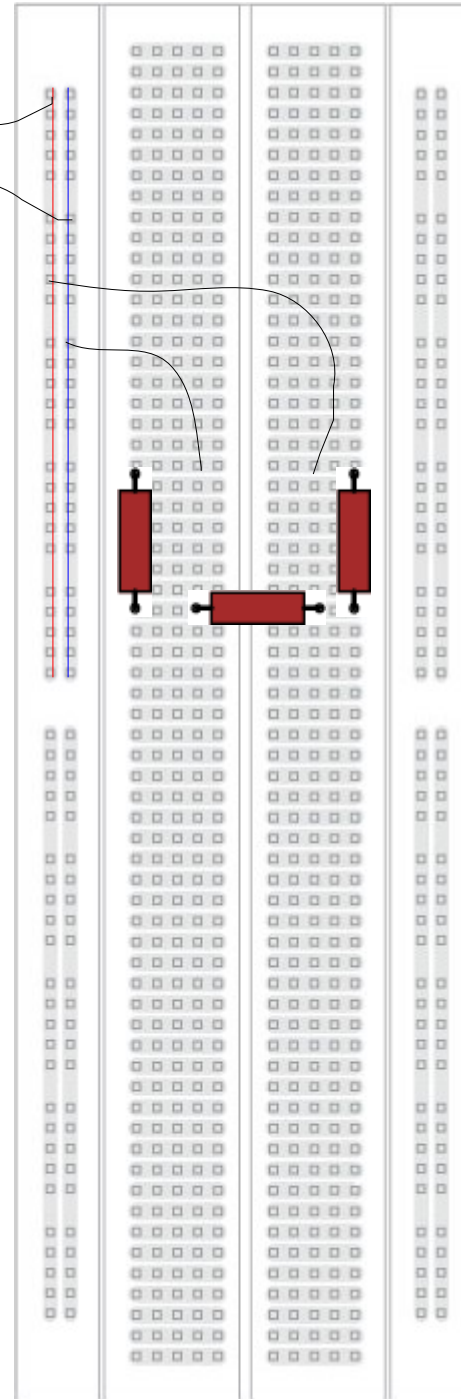
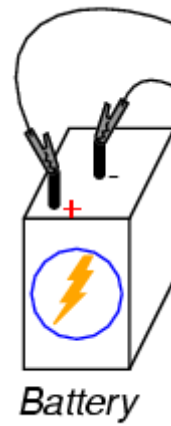
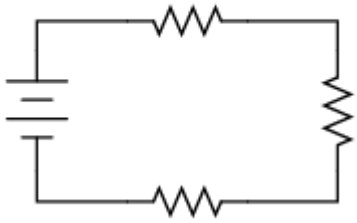
Ejemplo



Otro ejemplo

Diagrama esquemático

Schematic diagram



Conexión en el Protoboard

